

# MERLIN

The Merlin range uses the latest print head technology to print text, bar codes and logos at ultra high resolution, consistently producing quality coding. The Merlin is compact, user-friendly and robust. With Ethernet connectivity as standard it is easily integrated into manufacturing control systems.

## Reduce your costs by replacing labels and pre-printed cases.

- 4 Merlin models available: 170, 175, 350 and 700
- Prints high quality text, graphics and industry standard bar codes
- High quality steel construction
- Quick to start up and simple to maintain
- Automatic purge facility
- Real time clock for printing production times, shift codes and sell by dates
- Automatic product count
- Range of ink colours available: Black, Blue, Green and Red
- Low ink alarm
- Remote print head options
- Multi-lingual
- Password protection
- External data capture capability
- Local programming via in-built keypad
- Central control via PC and Connect software

and/or

### MERLIN 170

- High quality alphanumeric print
- Maximum print height 17 mm

Suitable for stand alone capabilities only (No connectivity)

### MERLIN 700

- An integrated system for high quality and industry standard bar codes
- Maximum print height 70 mm



### MERLIN 350

- High quality alphanumeric and graphics with connectivity
- Maximum print height 35 mm



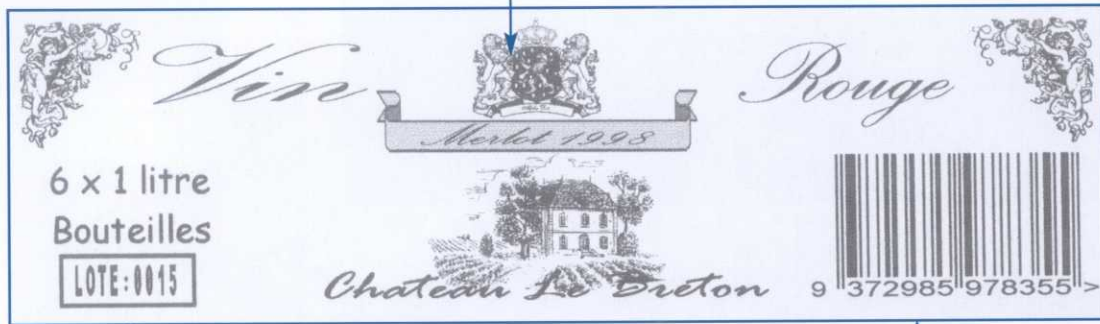
### MERLIN 175

- High quality alphanumeric and graphics
- Maximum print height 17 mm



# high resolution inkjet printers

High quality text, symbols and graphics



Automatic calculation of variable data

Industry standard bar codes

## SOFTWARE

### Apprentice – message creation software

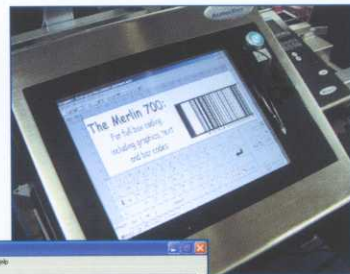
Enables user to:

- Create messages containing text, logos and bar codes
- Set up internal fields and prompted variable data
- Download messages to printer (232 or Ethernet)

### Connect – factory-wide control of networked printers

In addition to Apprentice features allows users to:

- Define network structure and administer security options
- From a central control point, create, edit and send messages via Ethernet to multiple units
- Set up communications ports and message templates for external data transfer
- Log production data such as box counts and production times



### Controller

- Industrial touch screen display
- Controls 7 print heads as standard, expandable to 256
- Wireless compatible



### Remote Head

Remote head option can be fitted for printing at angles or in confined spaces.



Trays •

Paper •

Plaster •

Wood •

Timber •

Kraft Outer Cases •

Medium Density Fibreboard •

Corrugated Cardboard Cases •

## SUBSTRATES

The Merlin prints onto a range of porous and semi-porous substrates including;



Tel: +44 (0)1264 781 989  
Fax: +44 (0)1264 782 017

www.alphadot.com  
info@alphadot.com

**ALPHA DOT**  
World Class Coding Solutions

# Technical Specification

# Print Samples

	Merlin Range			
	170	175	350	700
Max. Character Height (mm)	17.5	17.5	35	70
Text height options (mm)				
Stand alone mode	2, 4, 8, 17	2, 4, 8, 17	4, 8, 17, 35	8, 16, 34, 70
Ink capacity	200ml or 1 Litre	200ml or 1 Litre	200ml or 1 Litre	1 Litre
Remote head option	Yes	Yes	Yes	n/a
Message capacity	50	200*	200*	200*
Barcode capability	No	Yes	Yes	Yes
Maximum Line Speed	80m per min	80m per min	80m per min	80m per min

## Dimensions:

Print Head Length	235 mm	295 mm	295 mm	370 mm
Print Head Width	113 mm	113 mm	113 mm	113 mm
Print Head Depth	108 mm	125 mm	146 mm	160 mm

## 200ml Base

Ink Base Height	360 mm	360 mm	360 mm	n/a
Ink Base Width	152 mm	152 mm	152 mm	n/a
Ink Base Depth	108 mm	108 mm	108 mm	n/a

## 1 Litre Base

Ink Base Height	507 mm	507 mm	507 mm	507 mm
Ink Base Width	228 mm	228 mm	228 mm	228 mm
Ink Base Depth	139 mm	139 mm	139 mm	139 mm

Unit Weight (200ml)	8.0 Kg	8.0 Kg	8.0 Kg	n/a
Unit Weight (1 Litre)	10.0 Kg	10.0 Kg	10.0 Kg	10.0 Kg
Stainless Steel	Yes	Yes	Yes	Yes
Electrical	Single phase. Worldwide power supply 90 240 v @ 50-60 Hz			
Ethernet / 232 communications facility	No	Yes	Yes	Yes
Working Temperature	5° - 35° C	5° - 35° C	5° - 35° C	5° - 35° C
Humidity	10% - 90%	10% - 90%	10% - 90%	10% - 90% Non- condensing

\* memory upgrade for greater message capacity available on request

Due to ongoing research and development, Alpha Dot reserves the right to change these specifications without prior notice.



Merlin 700 Brown cardboard



Merlin 700 Brown cardboard



Merlin 700 Thin plywood



Merlin 350 White cardboard



Merlin 350 Brown cardboard



Merlin 175 Brown cardboard



Merlin 170 White cardboard



Alpha Dot • Hollom Down Road • Lopcombe • Salisbury • Wiltshire • SP5 1BP • UK

Tel: +44 (0)1264 781 989 • Fax: +44 (0)1264 782 017 • www.alphadot.com • info@alphadot.com



A long standing member of the PPMA since 1988