

unbeatable
You too

ANSER™ | U2
unbeatable worldwide

Contact our Sales Rep.



The above information is printed by U2 printer

Distributed by

P/N: 3501010015

Welcome to the



Your Imagination. Our Innovation.

Affordable

Affordable



U2™

The world's smallest inkjet printer packed with colossal set of features that delivers superior packaging printing performance at an amazing low price.



Compact Size
The world's smallest and most affordable inkjet printer, weighing only 0.49kg (1.08Lb)



4-in-1 Sandwich Design
ANSER's proprietary 4-in-1 sandwich design, integrating with screen, controller, printhead & ink cartridge



Remote Keypad
Pocket-size remote keypad with user-friendly operation



Full-Color Large LCD Display
2.8-inch color LCD with LED backlight screen



SD Card Slot Design
Easy software upgrade and data backup



Anti-Shock Mechanism Design
Eliminating the unexpected damage to your printhead with ANSER's unique protective design



Plug-n-Print
Ink cartridge design with no maintenance and downtime costs



600 dpi (For U2 HD Only)
2X the resolution for printing crisp & precise HD barcodes. Now available on both U2 & U2-mobile



More Ink Selections
Now you can print onto a variety of substrates using ANSER's new Inkinity ink family

Revolutionary

Revolutionary



U2TM mobile

The world's most compact mobile printer. It's ultra portable, lightweight, and easy-to-operate! Capable of printing anywhere, at any angle, without ink leakage.



Ultra Lightweight
The world's lightest mobile printer, weighing only 1kg (2.21lb)



All IN ONE BOX
One tiny box with all the accessories you will ever need: U2 mobile, remote keypad, 2 high capacity rechargeable batteries, battery charger, SD card & SD card reader



Ultra Portable
Capable of printing anywhere, at any angle, without ink leakage



7 hrs.
Long Lasting Battery
7 hours of continuous printing with more than 200,000 characters



Remote Keypad
Pocket-size remote keypad with user-friendly operation



2.8"
Full-Color Large LCD Display
2.8-inch color LCD with LED backlit screen



SD Card Slot Design
Easy software upgrade and data backup



Plug-n-Print
Ink cartridge design with no maintenance and downtime costs



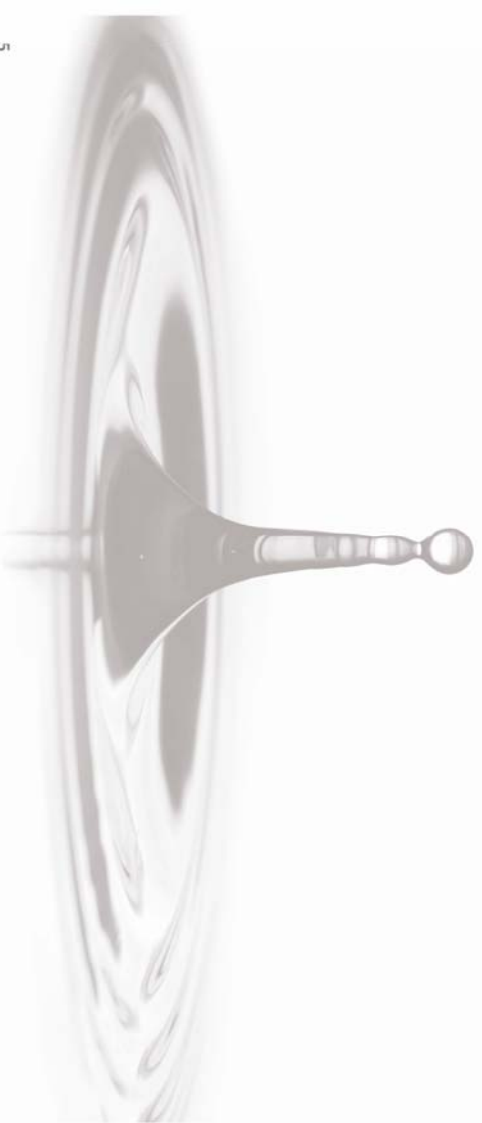
600 dpi (For U2 HD Only)
600 dpi resolution for printing crisp & precise HD barcodes. Now available on both U2 & U2-mobile



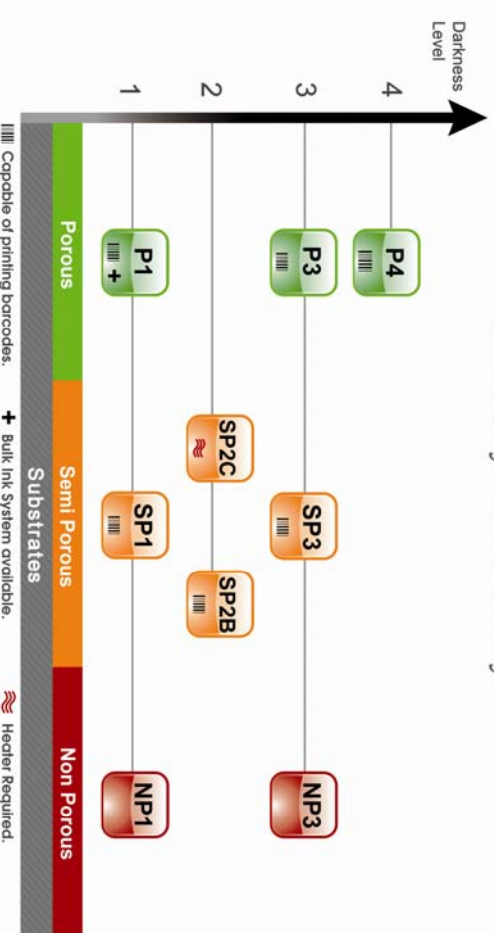
More Ink Selections
Now you can print onto a variety of substrates using ANSER's new Infinity ink family

Inkfinity

Inkfinity™



Inkfinity™ Ink Family



P Series

- P4:** Achieves continuous high-speed printing with darkest color.
- P3:** Provides an exceptional optical color density that is 2X darker than P1 ink.
- P1:** Prints on basic porous substrates.

SP Series

- SP3:** Covers most of semi-porous & porous substrates. Capable of outputting crisp & precise barcodes.
- SP2C:** A specialized ink designed for PVC substrates. Heater is required.
- SP2B:** A specialized ink designed for varnished substrates.
- SP1:** Prints on basic semi-porous substrates.

NP Series

- NP3:** Specially designed for printing on non-porous substrates, with longer decap time, drying within seconds.
- NP1:** Prints on basic non-porous substrates.

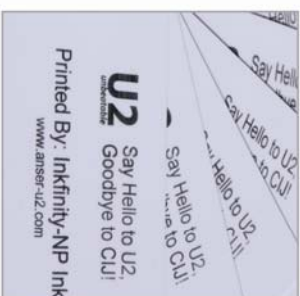
ANSER continuously develops a wide variety of ink to meet your printing needs, please contact our distributors for more ink solutions.

Solutions

Solutions



HD Barcode



Plastic Card



Inner Package



Outer Package



Handheld



Wood



Label



Print & Apply



PVC Pipe



Specifications



Display
LED Indicators
Available Languages
Operation Menu
Input Device
Plug-in-Print Design
Printable Images

- 2.8" full-color LCD with LED backlight
- 5 indicators: Alarm, Ink low, Print, Run, Remote on/off
- English, Spanish, French, Portuguese, German, Russian, Chinese, Japanese
- Digital Menu Selection (DMS) for easy operation
- Pocket-size IR remote keypad
- Hewlett-Packard T1J 2.5 printing technology
- Alphabetic, logo, date/time, expiry date shift code, counter, lot-box code and barcode
- 1, 2, 3, 4 lines. Total line height is limited to 12.7mm (0.5")

Printable Lines & Heights
Heights: 2.7mm, 3.6mm, 5.6mm, 8mm, 10mm, 12.7mm
(0.11", 0.14", 0.22", 0.31", 0.39", 0.5")

Conveyor Speed
Message Storage Capacity
Power Supply

- 76 meters (250 feet) / minute at 300 dpi horizontal resolution
- Store up to 999 messages with SD card
- AC 100V-240V, 50/60Hz, 1.6A

Maximum power consumption: 60 Watts

Dimension (L/W/H)
Weight
Special Features

- 114 x 76 x 60 (mm) / 4.5 x 3.0 x 2.4 (inch)
- 0.49Kg (1.08Lb) – exclude cartridge and brackets
- 4-in-1 compact design (controller, screen, printhead and cartridge)
- Complete stand-alone, no PC required
- AUX I/O port for external encoder, photocell or alarm kit connection
- Built-in SD card slot for software upgrade & data backup
- Anti-shock mechanism for printer protection
- Built-in photocell, no extra costs
- Dual Switchable Nozzle Design (DSND) allows you to switch nozzles when one is not performing properly
- Hot-Swap: circuit safeguard for quick ink cartridge changeover
- LOG report for security check
- Multi-level password protection
- System backup & restore to ensure your data is secured
- Daylight Saving Time

Installation

Standard Mounting Brackets
Distance to Print Surface

- Standard side/downside printing brackets for 42cc ink cartridge
- Not greater than 6 mm (0.25")

Ink Solutions

- The Inkfamily Ink Family offers you a wide range of ink selections for printing on porous, semi-porous and non-porous substrates

Optional Accessories

Alarm Kit
Encoder Kit
External Photocell Kit

- Available for external alarm kit connection
- Ensuring high-quality printing on unstable conveyor
- For external photocell installation

Environment

- Operating Temperature Range

Warranty

All Equipment

- 5 ~ 40°C (41 ~ 104°F)
- 12 months (exclude consumer parts)

Display
LED Indicators
Available Languages
Operation Menu
Input Device
Plug-in-Print Design
Printable Images

- 2.8" full-color LCD with LED backlight
- 5 indicators: Alarm, Ink low, Print, Run, Remote on/off
- English, Spanish, French, Portuguese, German, Russian, Chinese, Japanese
- Digital Menu Selection (DMS) for easy operation
- Pocket-size IR remote keypad
- Hewlett-Packard T1J 2.5 printing technology
- Alphabetic, logo, date/time, expiry date shift code, counter, lot-box code and barcode
- 1, 2, 3, 4 lines. Total line height is limited to 12.7mm (0.5")

Printable Lines & Heights
Heights: 2.7mm, 3.6mm, 5.6mm, 8mm, 10mm, 12.7mm
(0.11", 0.14", 0.22", 0.31", 0.39", 0.5")

Print Speed
Message Storage Capacity
Dimension (L/W/H)
Weight
Special Features

- 57 meters (148 feet) / minute at 400 dpi horizontal resolution
- Store up to 999 messages with SD card
- 212 x 135 x 120 (mm) / 8.3 x 5.3 x 4.7 (inch)
- 1Kg (2.20Lb) – exclude cartridge and battery
- ALL IN ONE BOX design
- Ultra portable, capable of printing anywhere at any angle
- Built-SD card slot for software upgrade & data backup
- Dual Switchable Nozzle Design (DSND) allows you to switch nozzles when one is not performing properly
- Hot-Swap: circuit safeguard for quick ink cartridge changeover
- LOG report for security check
- Multi-level password protection
- System backup & restore to ensure your data is secured
- Daylight Saving Time

Long Lasting Battery

Rated Capacity
Standard Voltage
Input/Output Voltage
Charging Voltage
Charging Hours
Charging Temperature Range
Discharging Temperature Range
Dimension (L/W/H)
Weight
Cycle Life
Continuous Printing Hours
Stand-by Time

- 3,700 mAh
- 11.1V
- 12.6V
- 12.6V
- 2.5 hours
- 0 ~ 45°C (32 ~ 113°F)
- -10 ~ 45°C (14 ~ 113°F)
- 65 x 51 x 37 (mm) / 2.5 x 2 x 1.5 (inch)
- 165g (0.36Lb)
- More than 300 cycles
- 7 hours
- 9 hours

Ink Solutions

- The Inkfamily Ink Family offers you a wide range of ink selections for printing on porous, semi-porous and non-porous substrates

Environment

- Operating Temperature Range

Warranty

All Equipment

- 5 ~ 40°C (41 ~ 104°F)
- 12 months (exclude consumer parts)