

HOTMARKER

HOTMARKER M-3E

HAND-HELD TYPE MARKING MACHINE



CABLES / WIRES



TUBES



MARKER LABELS
*Optional "M52-17" required.

CTK CORPORATION

HOTMARKER M-3E

QUICK-CHANGE CHARACTER WHEEL SYSTEM



11 facets per wheel
(10 characters + blank)

①	②	③	④	⑤	⑥	⑦
A	K	R	1	1	1	1
B	L	S	2	2	2	2
C	M	T	3	3	3	3
D	N	U	4	4	4	4
E	O	V	5	5	5	5
F	P	W	6	6	6	6
G	Q	X	7	7	7	7
H	+	Y	8	8	8	8
I	-	Z	9	9	9	9
J	/	.	0	0	0	0
*	*	*	*	*	*	*

※:Blanks

Standard character
wheel arrangement

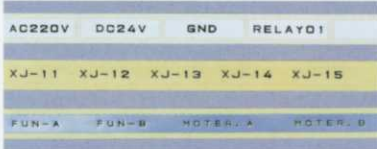
SIZE (HxWmm)	FACET	ORIENTATION	APPLICATIONS
2.4 x 2.4	CURVED(4.5R)	HORIZONTAL	Cables / Wires
1.8 x 1.8	CURVED(2.0R)	HORIZONTAL	
1.8 x 0.9	CURVED(2.0R)	VERTICAL	
2.4 x 2.4	FLAT	HORIZONTAL	Tubes Marker Labels Cable ties
1.8 x 1.8	FLAT	HORIZONTAL	
1.8 x 0.9	FLAT	VERTICAL	

Just rotate wheels to select characters.
Up to 7-digit marking possible.
Wheel arrangement easily changeable.

MARKED SAMPLES



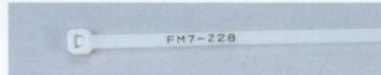
Heat shrink tubes



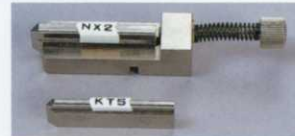
Marker Labels



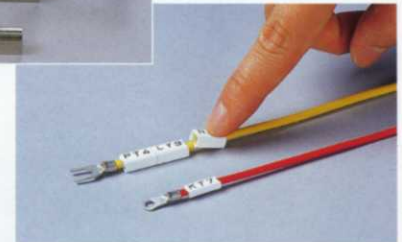
Wires



Cable ties



MBS-10



Clip-on cable markers

*Optional "MBS-10" required for marking.

M-3E STANDARD SET



Accessories included in the standard set:
*Character wheel: 1 set (pre-mounted on main unit)
Tube guide (I.D. 5mm): 1 pce.

SPECIFICATIONS

VOLTAGE	Input AC220-240V 50Hz Output AC10V (Max.)
HEATER	22W / 150°C (Approx. Max.)
TEMPERATURE	4-step control
TOOL LENGTH	About 280mm (or 11", main unit only)
TOOL WEIGHT	About 850g (or 1.9 lb, main unit only)
DIMENSIONS	375W x 285D x 120Hmm (carrying case)

OPTIONAL ACCESSORIES



M52-17
For Marker Labels



MBS-10
For clip-on cable markers



TUBE GUIDE
Special sizes I.D. 4, 6, 7, 8 and 10.5mm also available.



PRECAUTIONS TO ENSURE SAFETY



Before using the machine, be sure to read the instruction manuals and understand the proper usage of the machine.

The information contained in this leaflet, specifications and external appearance of products are subject to change without notice.

CE

HOTMARKER

MANUFACTURER

CTK CORPORATION

1-7-17, Kandaizumi-cho,
Chiyoda-ku, Tokyo 101-0024 Japan

Tel: (03)3861-5610

Fax: (03)3861-5880

http://www.hotmarker.co.jp